

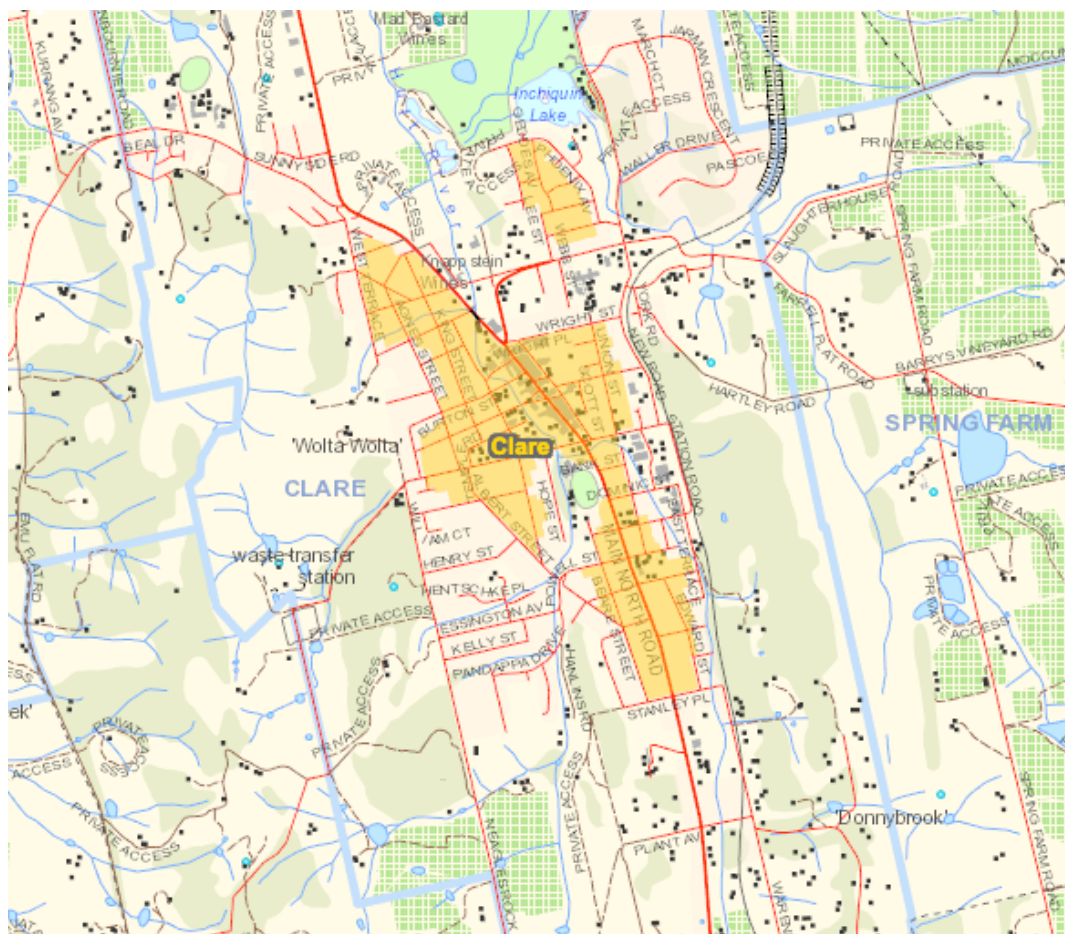
Bushfire Safer Places and Bushfire Last Resort Refuges in and near the Clare and Gilbert Valley Council District

There are several CFS designated **Bushfire Safer Places** in or adjacent to the Clare and Gilbert Valley Council area. Bushfire Safer Places are identified by yellow overlay on maps.

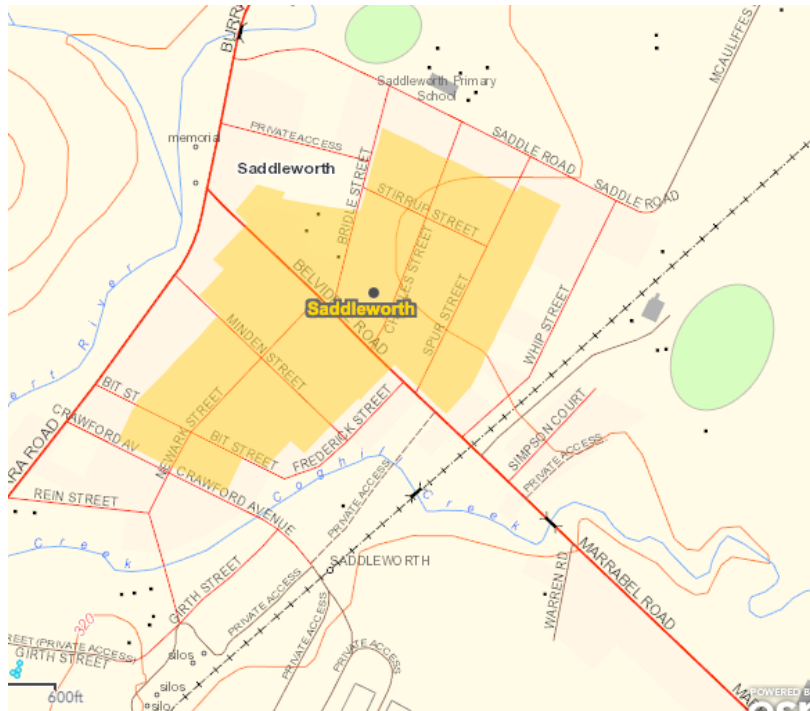
A Bushfire Safer Place is a place of relative safety. It may be used as a first resort for people who have planned to leave high-risk locations early on a bad fire day. If you choose to stay in a Bushfire Safer Place, or if you relocate to one, it is unlikely that you will be exposed to direct flame or radiant heat, but you may be exposed to sparks, embers and smoke.

If you intend to relocate to a Bushfire Safer Place you should do so early in the day or the night before a high risk fire day. Last minute decisions to relocate in the face of fire are extremely dangerous.

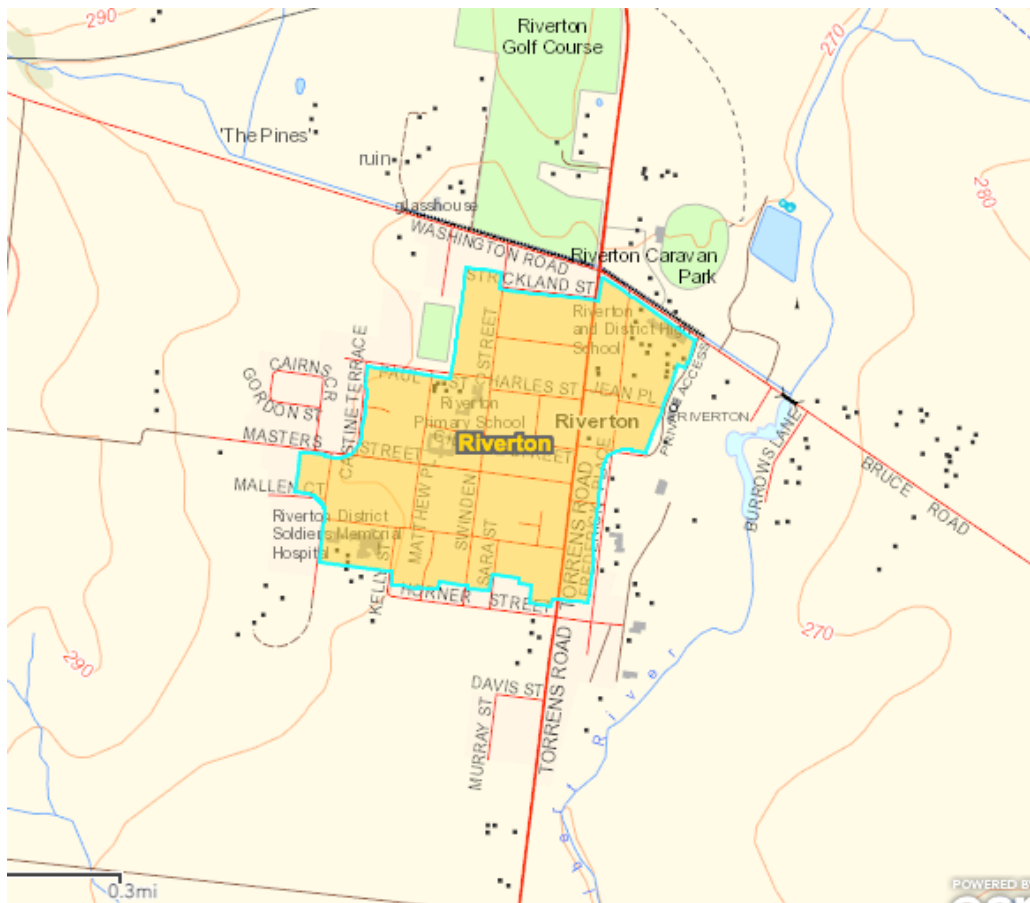
Clare Bushfire Safer Place (yellow shaded area)



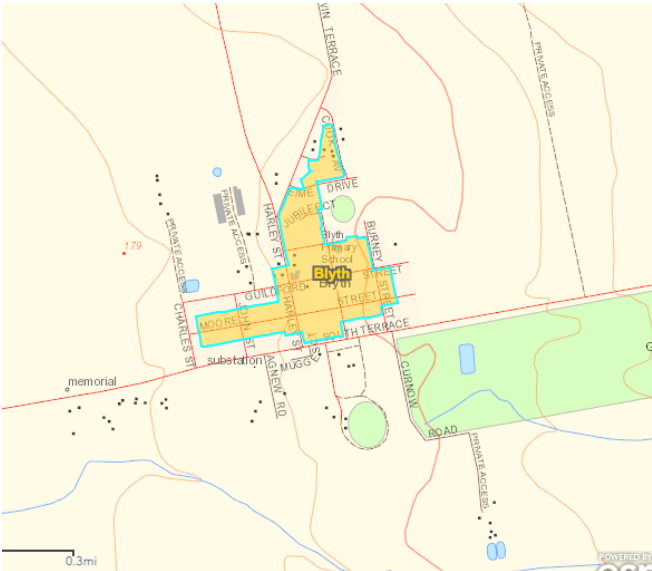
Saddleworth Bushfire Safer Place (yellow shaded area)



Riverton Bushfire Safer Place (yellow shaded area)



Blyth Bushfire Safer Place (yellow shaded area)



Balaklava Bushfire Safer Place (yellow shaded area)



There are 3 designated **Bushfire Last Resort Refuge** in the Clare and Gilbert Valley Council area. They are identified by this green icon on maps. They are at Auburn, Mintaro and Manoora.



A Bushfire Last Resort Refuge is a space or building which you could go to during a bushfire in your area. It is an area that may provide a minimum, temporary level of protection from the immediate life-threatening effects of radiant heat and direct flame contact in a bushfire.

A Bushfire Last Resort Refuge is intended to provide a place that offers some level of protection if there is nowhere else to go during a bushfire. It does not guarantee the survival of those who assemble there. You should only use a Bushfire Last Resort Refuge when your Bushfire Survival Plan has failed, and you cannot safely relocate to a Bushfire Safer Place.

